

# The Matrix in Integrated Community Care: Knitting The Web, Filling The Gap

## Comprehensive Child Development Service 兒童身心全面發展服務

Dr. Joseph Chung  
Associate Consultant

Pamela Youde Nethersole Eastern Hospital

# Comprehensive Child Development Service

## 兒童身心全面發展服務

---



---

▶ Timely identification and intervention of children and families in need

# Objective of CCDS

---

To decrease health inequalities in early years by improving access and quality of health services for pregnant women, mothers and children from disadvantaged families

To bring up healthy and well adjusted child from disadvantaged families

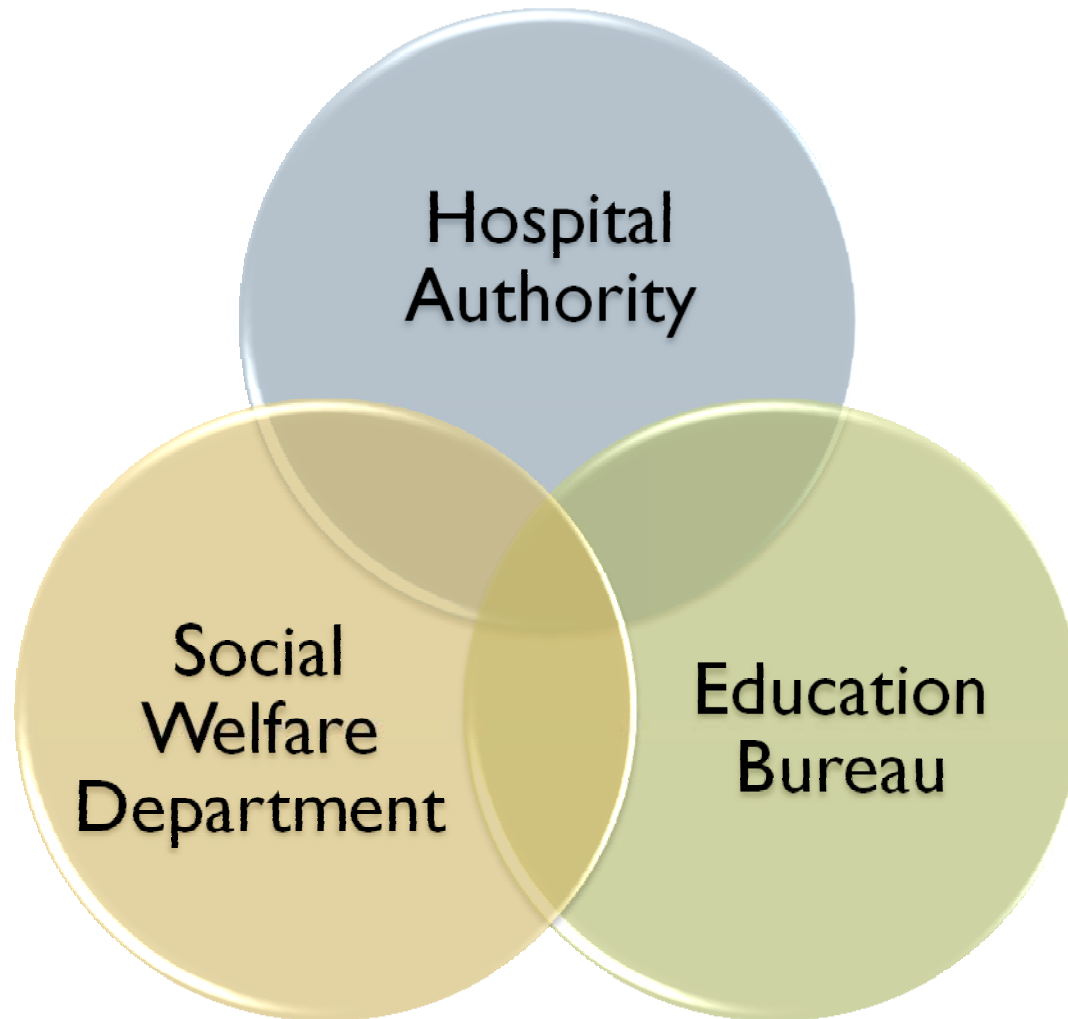


---

#### **4 major components in CCDS:**

1. Identification and management of high-risk pregnant women
2. Identification and management of mothers with postnatal depression
3. Identification and referral of children and families in need of social service intervention
4. Identification and referral of pre-school children with physical, developmental, behavioral & family problems







醫院管理局  
HOSPITAL  
AUTHORITY



From pregnancy to the child at 5 years old

# Maternal and Child Health Centre

---



- Routine enquiry of past psychiatric history

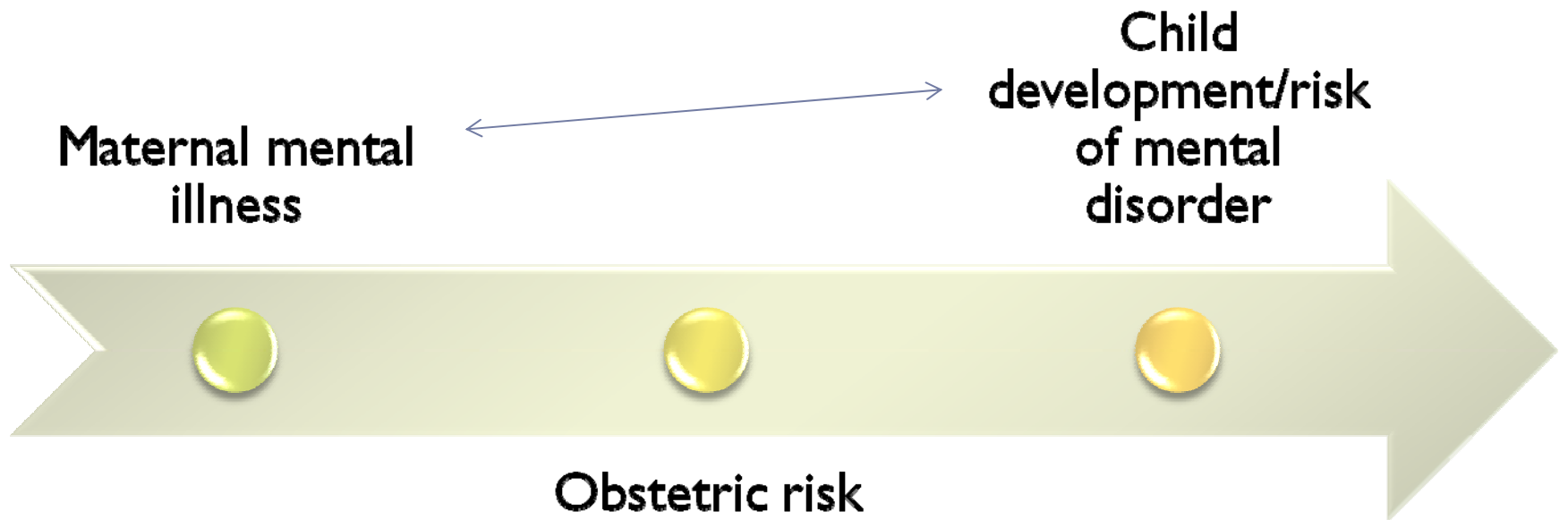


- Universal EPDS screening at 6-8 weeks



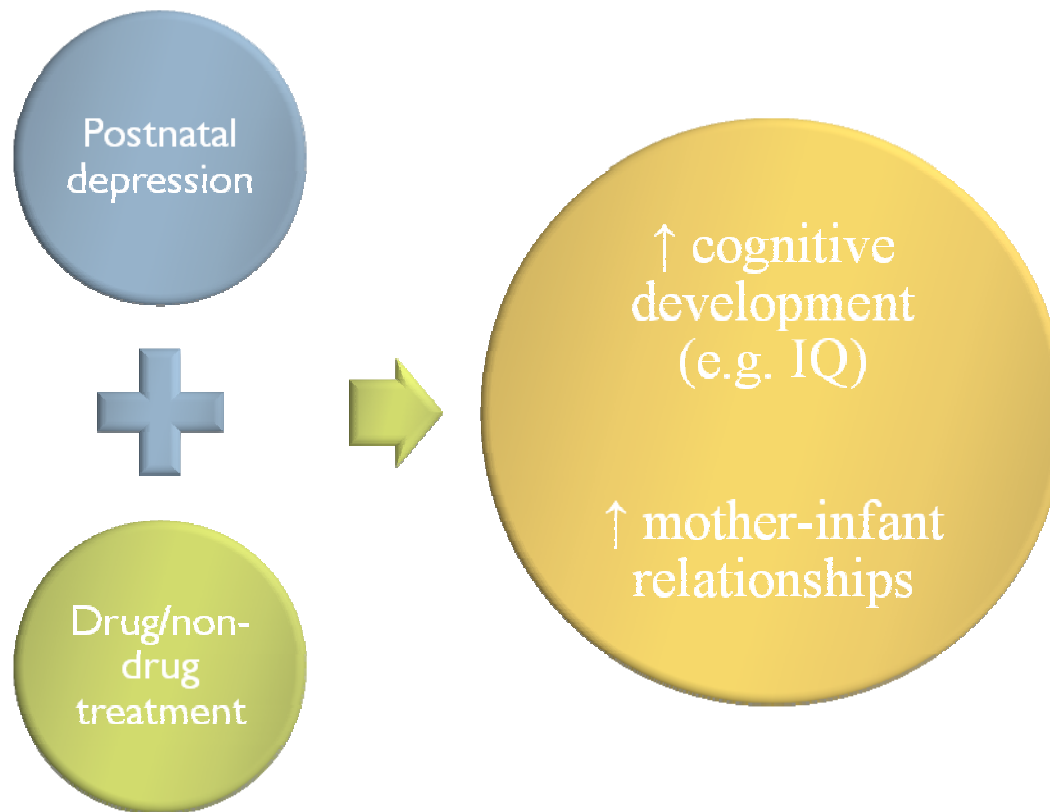
- Structured enquiry





One in ten women will suffer from postnatal depression

---



柴灣母嬰健  
康院



西灣河母嬰  
健康院



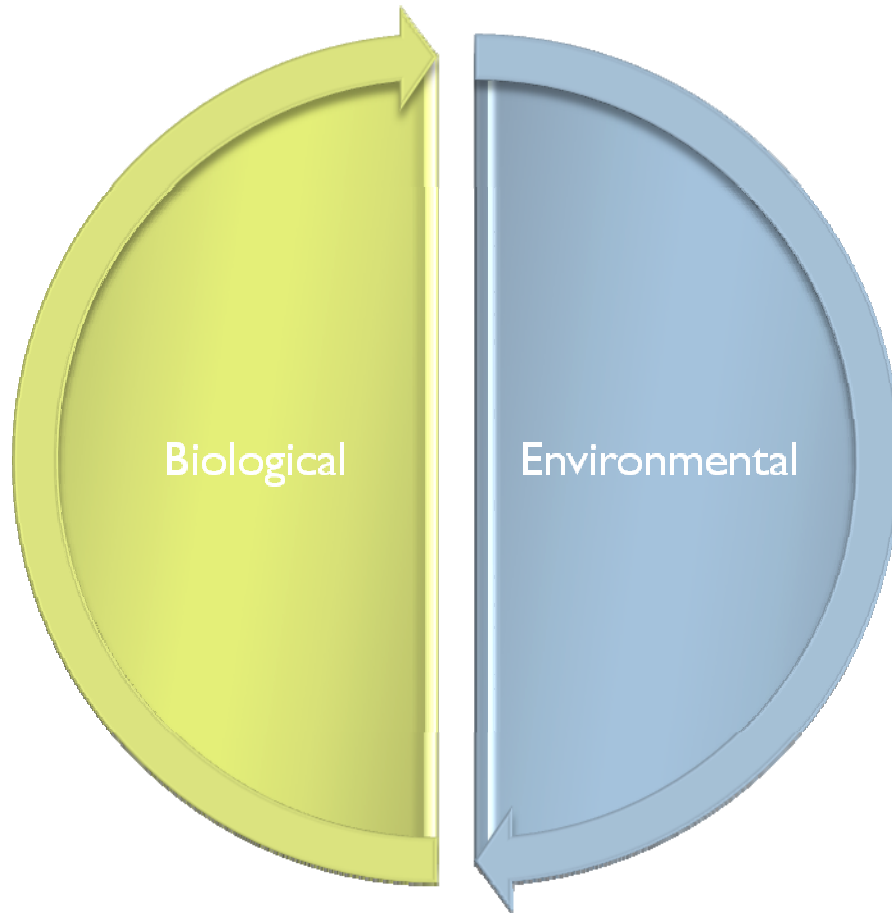
柏立基夫人  
母嬰健康院

- ▶ Yearly delivery in PYNEH ~ 4,000
- ▶ Total antenatal new cases in three HKE MCHCs in 2010: 2209
- ▶ Total child health new cases in three HKE MCHCs in 2010: 5270



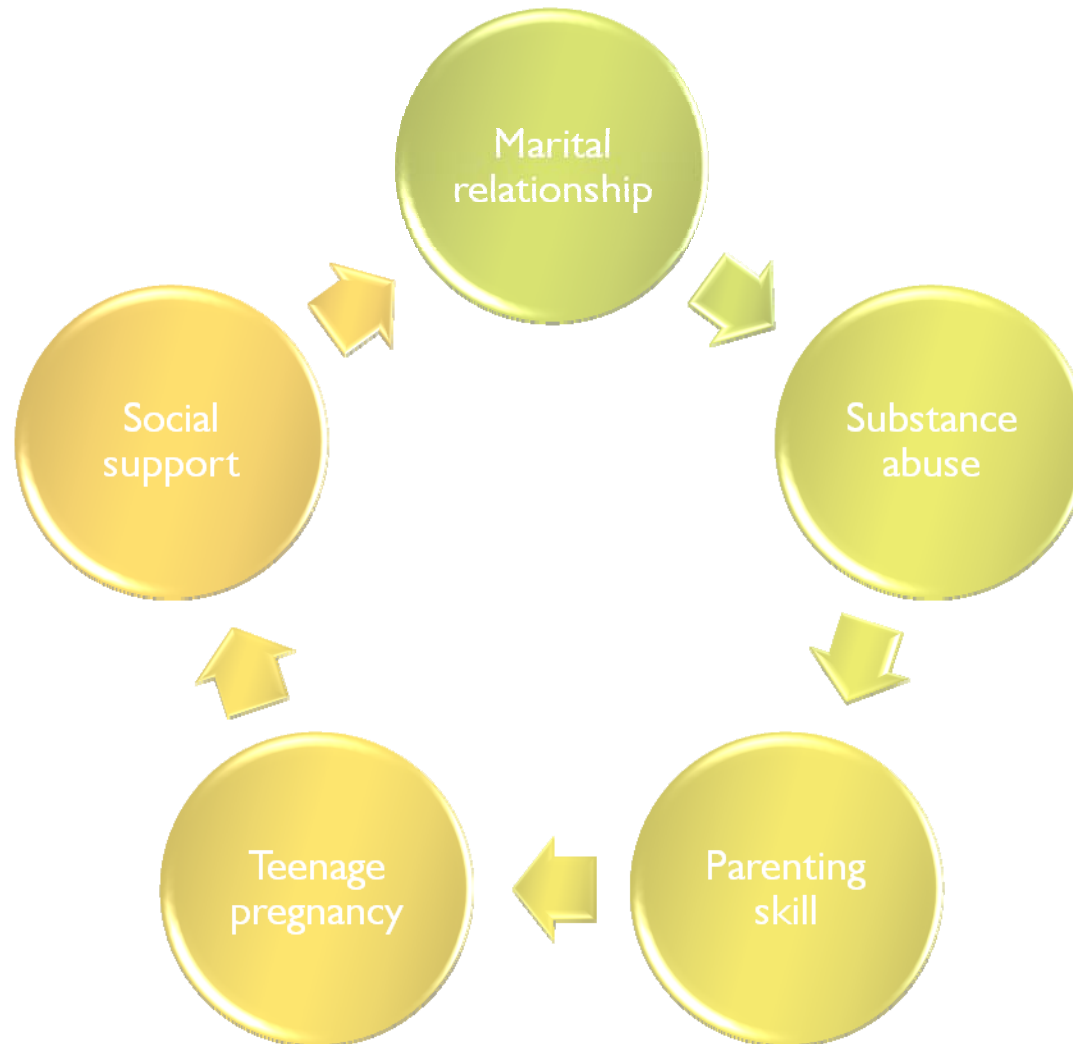
## Contributing factors

---



# Areas for intervention

---



- 
- ▶ NGOs can provide strategic services to this group of patients

---

聖雅各福群會

香港家庭福利會

明愛筲箕灣綜合家庭服務中心

明愛風信子行動

東華三院越峰成長中心

救世軍

香港基督教服務處心橋兒童發展計畫

浸信會愛群社會服務處

利民會

---



~ Thank you ~

