

Medical-Social Collaboration in Youth Mental Health

You(th) Dream, Our Dream

Mental Wellness Seminar

15th HKEC Symposium on Community Engagement 2021

3rd June 2021

Dr. CK KAN, Consultant (Psychiatry), PYNEH

Children and Adolescents Mental Health Needs



Disorders

Attachment, PDD, Disruptive Behaviour

Disruptive behaviour, Mood/ Anxiety disorder

Disruptive behaviour, Mood/ Anxiety disorder, SA, Psychosis

Services

CCDS, CAS, Specialist care

EDB support to schools, CAS, Student Health Services, Specialist care

EDB support to schools, Students Health Services, EASY, Specialist care

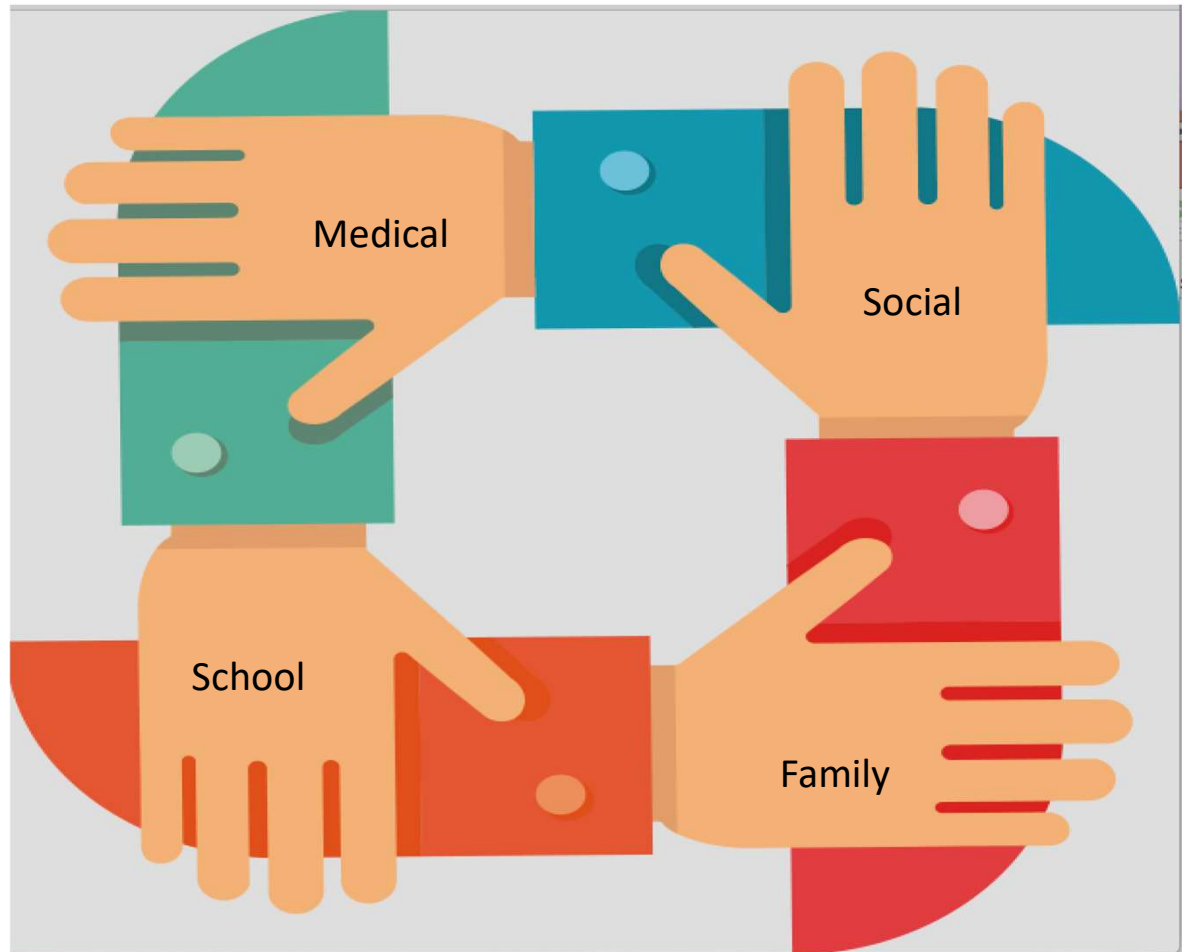
Service providers

DH, HA, SWD, NGOs, EDB

DH, HA, EDB, NGOs

DH, HA, EDB, NGOs

Medical-Social Collaboration in Youth Mental Health



Mental Health Review Report



Recommendations

40 recommendations on 20 areas by the Review Committee on Mental Health:

Promotion and Education

- 1 To develop a long-term strategy for mental health promotion

Research and Studies

- 2 To conduct regular studies and encourage development of evidence-based intervention programmes

Capacity Building

- 3 To enhance the capacity of multi-disciplinary and primary care professionals in handling mental health cases

Support to Children and Adolescents and their Families

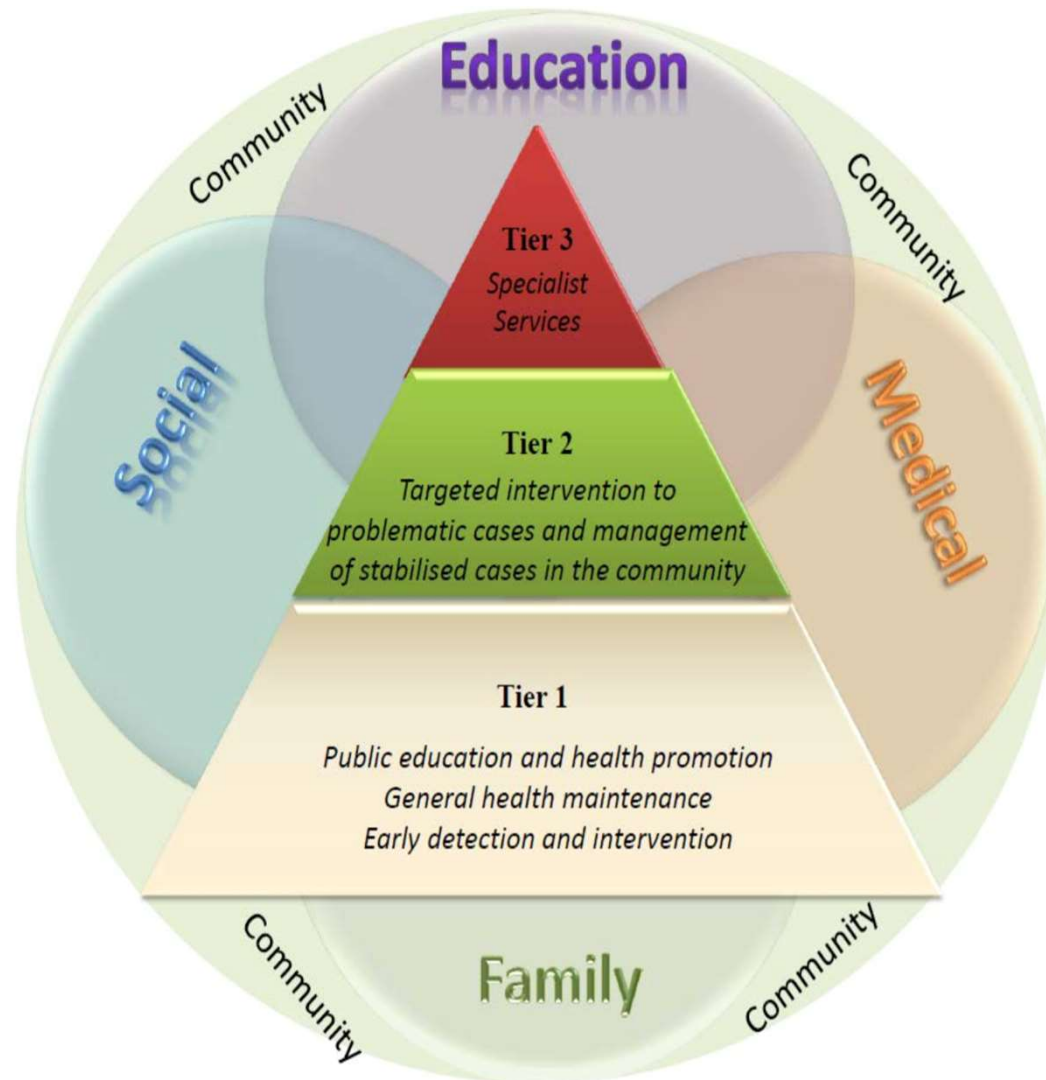
- 4 To strengthen services and manpower and provide more targeted support
- 5 To enhance cross-sectoral and multi-disciplinary coordination
- 6 To adopt multi-disciplinary intervention approach to strengthen support at school
- 7 To provide smooth service transition at different stages

Mental Health Services for Adults

- 8 To enhance "Case Management Programme" for severe mental illness (SMI) cases and "Early Assessment Service for Young People with Early Psychosis" (EASY) programme
- 9 To enhance common mental disorder (CMD) services and explore feasibility of public-private partnership (PPP)
- 10 To strengthen manpower of Siu Lam Hospital with a view to clearing up the waitlist

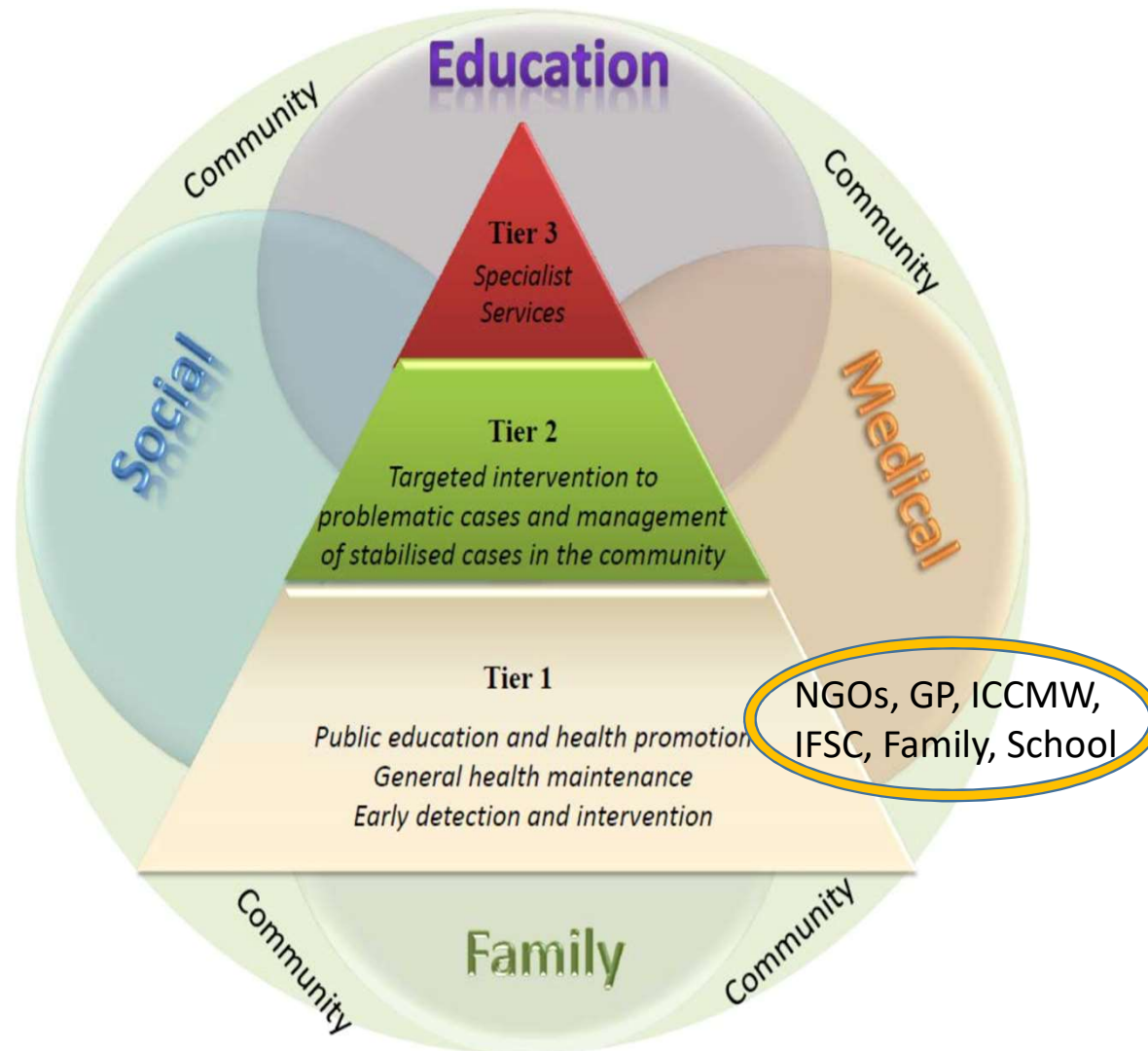


Three-Tier Stepped Care Model for C&A Mental Health



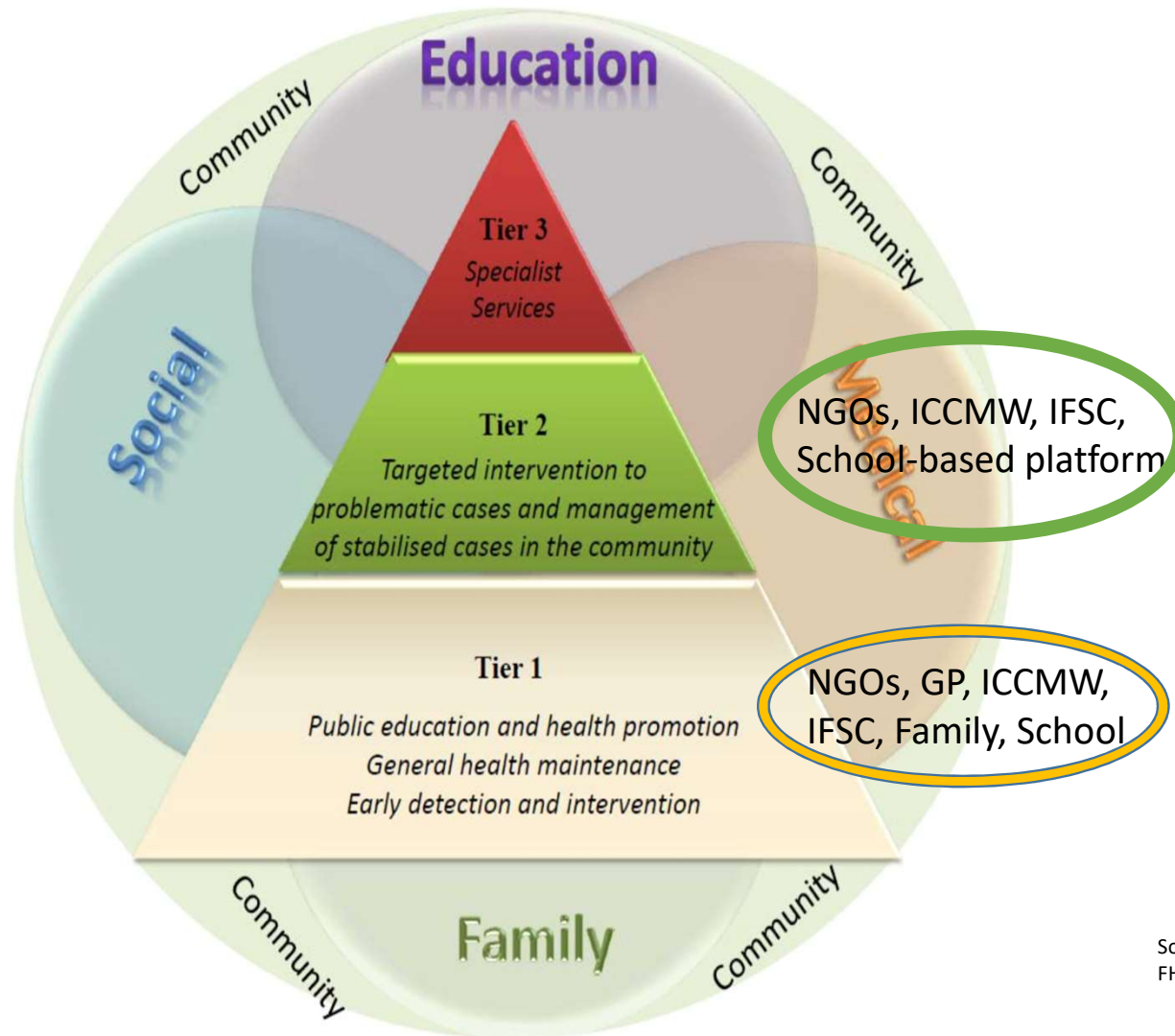
Source: Mental health Review Report 2017, FHB, HKSAR

Three-Tier Stepped Care Model for C&A Mental Health



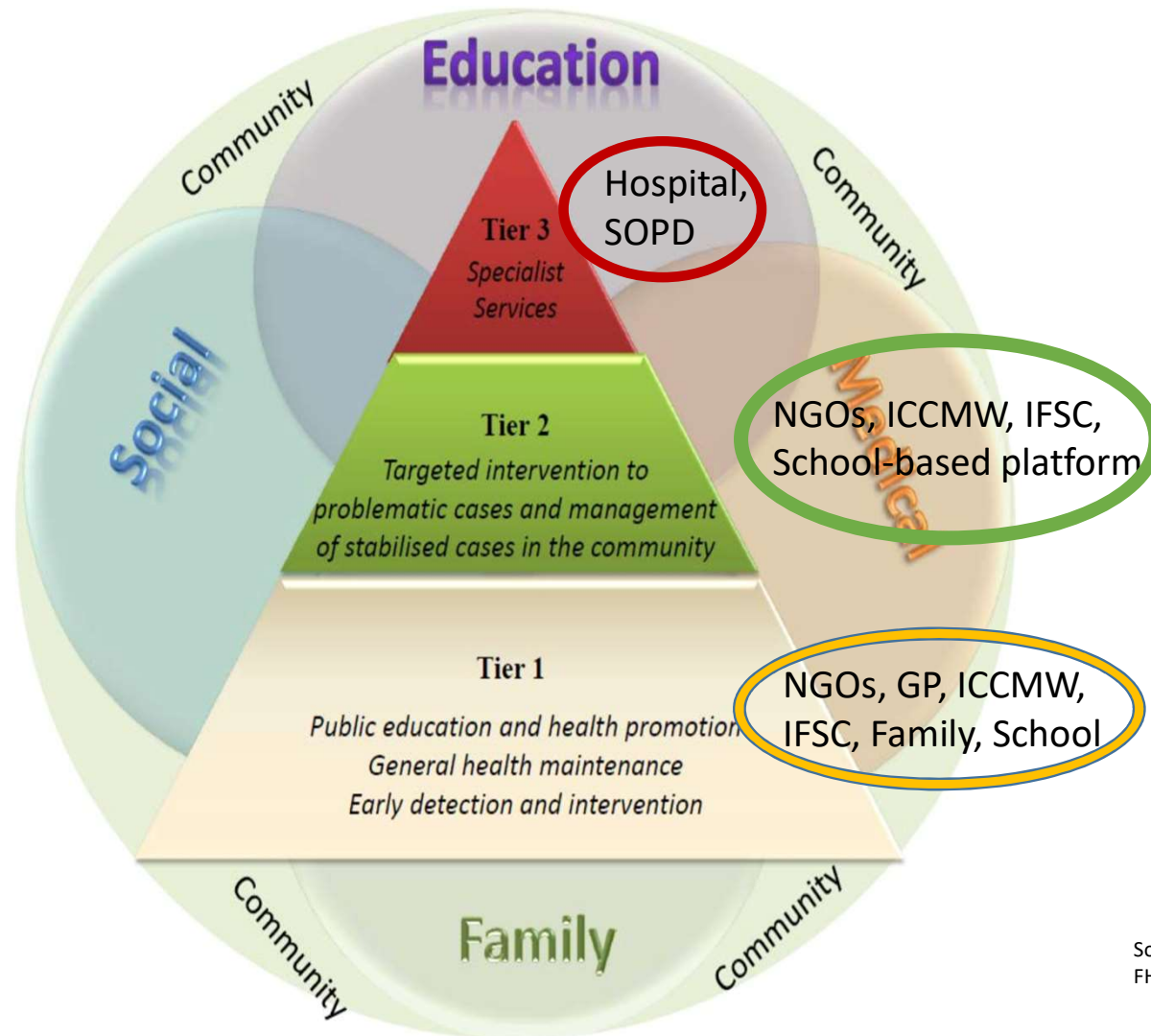
Source: Mental health Review Report 2017, FHB, HKSAR

Three-Tier Stepped Care Model for C&A Mental Health



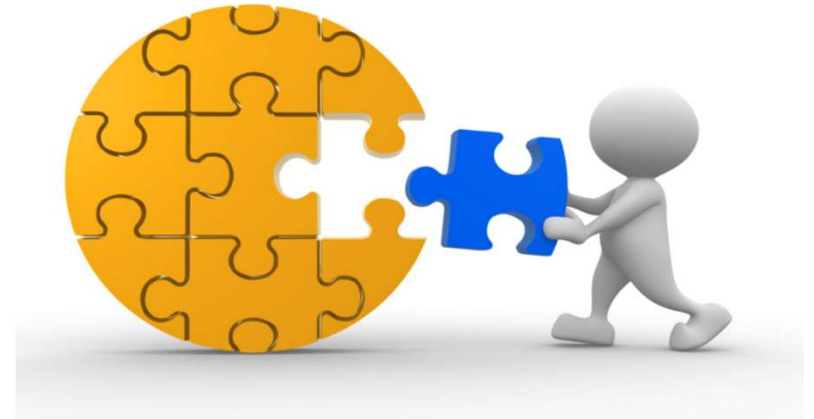
Source: Mental health Review Report 2017, FHB, HKSAR

Three-Tier Stepped Care Model for C&A Mental Health



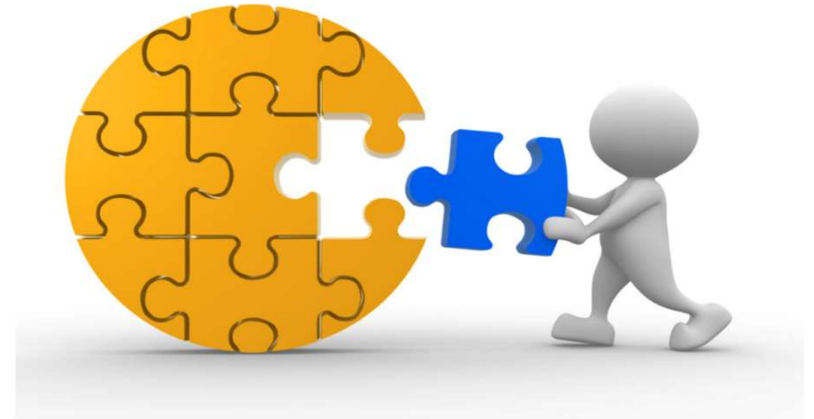
Source: Mental health Review Report 2017, FHB, HKSAR

Potential Gaps in the 3-tiers Stepped Care Model in HK



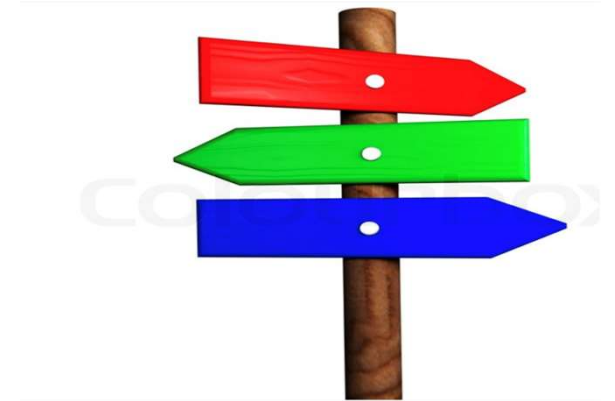
- Tier 1: Capacity building
- Tier 2: Coordination between upper and lower tiers
- Tier 3: Support and advice for Tier 2 multi-disciplinary professionals

Potential Gaps in the 3-tiers Stepped Care Model in HK



- Tier 1: Capacity building
- Tier 2: Coordination between upper and lower tiers
- Tier 3: Support and advice for Tier 2 multi-disciplinary professionals

Creating a Youth-friendly Platform through Medical-Social Collaboration



- **Education programs** to raise public awareness
- **Community network** to facilitate help-seeking by youths
- **Engagement platform** for common mental health issues
- **Early intervention** services to youths at risk of mental illness

Creating a Youth-friendly Platform through Medical-Social Collaboration

- **Multi-disciplinary and Cross-sectorial Collaboration**



- **Physical and Online Platforms**



Thank you!!