



HONG KONG
EAST CLUSTER
港島東醫院聯網

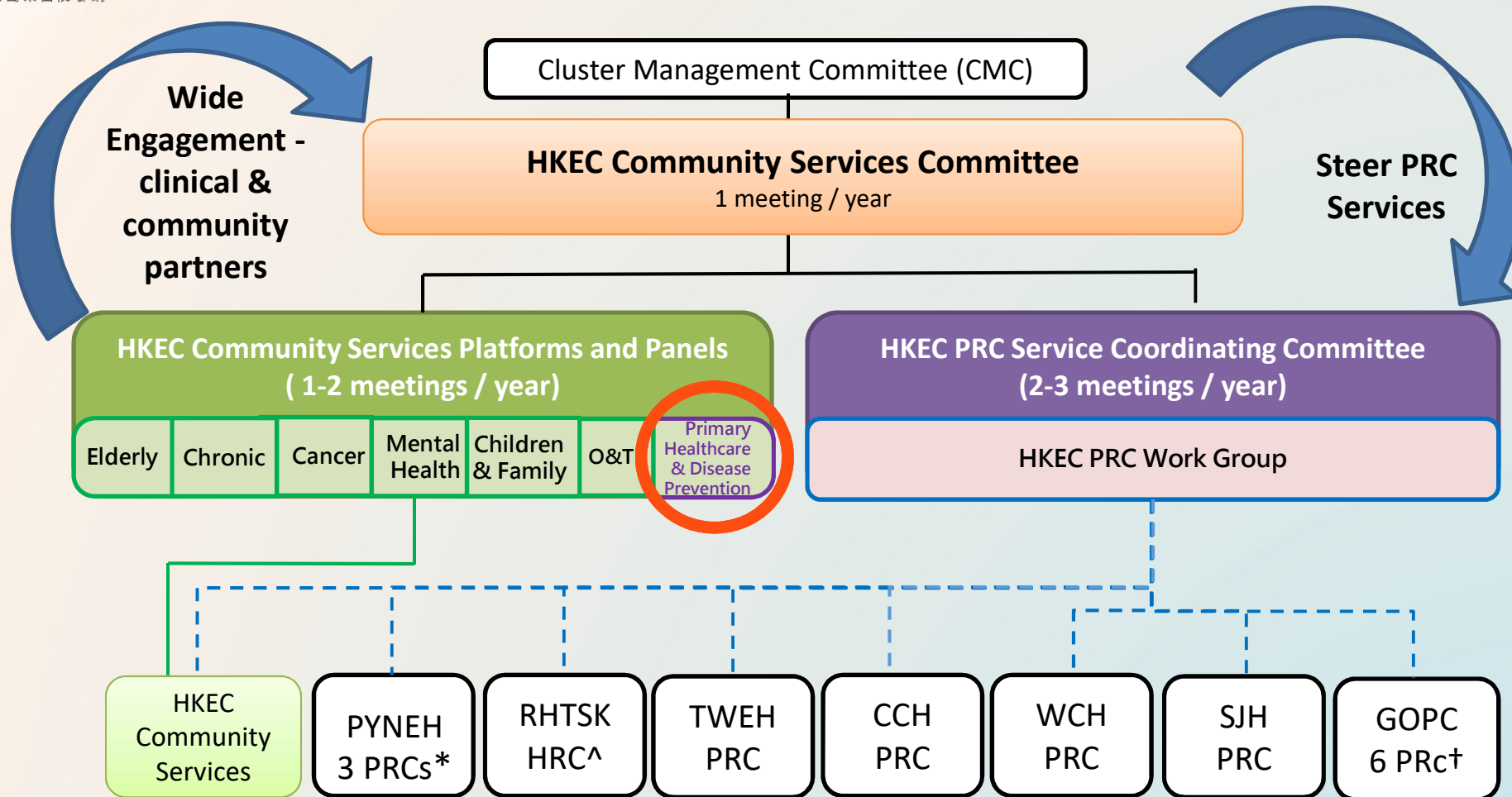


HKEC Community Service Platform

Primary Care and Disease Prevention

Dr. Michelle Wong
Deputizing COS & Consultant (FM&PHC) / DSD (P&CHC)
Hong Kong East Cluster

HKEC Community Services Governance & Meetings



*3 PRCs: Cancer PRC, Nethersole PRC and Mental Health PRC

^HRC: Health Resource Centre

†6 PRc: Patient Resource Corners

— Platforms and Panels are supported by HKEC Community Services Office

- - - PRC supervisors and GOPC PRc supervisor are the members of PRC Service Coordinating Committee

Platform Membership and Meeting

	HKEC	Community
Chairperson	Dr. Michelle WONG	DHC NGO partner (TBC)
Secretary	Ms. Rebecca WONG	
Partners	HKEC FM, HKEC CNS, HKEC CS, HKEC AH, HKEC Pharmacy, PYNEH NSD, TWEH NSD	SWD, DH
		District Councils (Eastern and Wan Chai)
		SJS, HOHCS, SAGE, TWGHs, YWCA, Methodist, BOKSS, RFHK, HKSR, TBA, ICCMW
		HKMA, HKDU, HKDA Dental Association HK Island School Heads Association Wan Chai District Headmasters' conference

Members: 32 (from 22 units/organizations)



Platform Meeting

- Re-activated and widen the platform's membership in 2019.
- Introduced and engaged members from various related stakeholders in the community both from medical and social sectors.
- Shared collaborative health projects supported by HKEC FM&PHC.
- Identified areas of patients' needs and current gaps.
- Also engaged school representatives as key partners in promoting primary healthcare for children and youth in the community, and to consider services/project to promote health and disease prevention in schools.



HKEC Community Health Program (2014 to 2016)

Date	Program Name	Collaborators	
		Internal	Community
27 Sep 2014	東區健康城市專題講座 - 糖尿病風險睇真D	<ul style="list-style-type: none"> HKEC FM&PHC HKEC DM 	<ol style="list-style-type: none"> 東區區議會 聚賢社 勿糖協會 聖雅各福群會 香港復康會 社區復康網 東華三院 柴灣浸信會社區健康中心 香港糖尿聯會
18 Apr 2015	糖尿風險睇真D	<ul style="list-style-type: none"> HKEC FM&PHC HKEC DM 	<ol style="list-style-type: none"> 灣仔區議會 灣仔賢毅社 灣仔家長教師會 勿糖協會 東華三院 香港復康會 社區復康網 香港糖尿聯會 聖雅各福群會
18 Nov 2015	少數族裔參觀	<ul style="list-style-type: none"> HKEC FM&PHC 	社會福利署鰂魚涌綜合家庭服務中心
4 Dec 2016	康城分區委員會 - 健康講座及健康檢查2016	<ul style="list-style-type: none"> HKEC FM&PHC, PY ONC, PY CPS, TWEH Nursing Team 	<ol style="list-style-type: none"> 康城分區委員會 香港勵志會陳融晚晴中心 香港基督教女青年會明儒松柏社區服務中心

HKEC Community Health Program (2018)

Date	Program Name	Collaborators	
		Internal	Community
6 Jan 2018	康城分區委員會 – 健康講座及健康檢查2018	<ul style="list-style-type: none"> HKEC FM&PHC 	<ol style="list-style-type: none"> 康城分區委員會 運動改變人生基金會 佛教何李寬德耆英康樂中心
15 Sep 2018	東區醫院25週年: 凝聚醫社 健康人生	<ul style="list-style-type: none"> HKEC FM&PHC PYNEH 	<ol style="list-style-type: none"> 東區區議會轄下公民教育、健康城市及文康勞工事務工作小組 東區民政事務處 東區區議會 香港癌症基金會、 社會福利署鰗魚涌綜合家庭服務中心 社會福利署東柴灣綜合家庭服務中心 明愛筲箕灣綜合家庭服務中心 香港家庭福利會北角綜合家庭服務中心
6 Oct 2018	港島東醫院聯網 糖尿科運動同樂日2018	<ul style="list-style-type: none"> HKEC FM&PHC TWEH RTSKH 	<ol style="list-style-type: none"> 循道衛理灣仔長者服務中心 香港復康會社區復康網絡康山中心 東華三院高黃慕貞紀念全人健康中心暨AJR慈善基金復康診所
1 Dec 2018	北角西分區委員會專題講座 - 醫社攜手 共建健康樂齡東區	<ul style="list-style-type: none"> HKEC FM&PHC 	<ul style="list-style-type: none"> 北角西分區委員會



HKEC Community Health Program (2018-2021)

Collaboration with MVECC on CIIF project in HKEC

Date	Program Name	Collaborators	
		Internal	Community
3 Jul 2018	社區投資共享基金計劃「健康生活。樂聚滿Fun」 健康講座 1 -認識冠心病	• HKEC FM&PHC	• 循道愛華村服務中心 愛華者樂中心
16 Oct 2018	社區投資共享基金計劃「健康生活。樂聚滿Fun」 健康講座 3 -什麼是認知障礙症/柏金遜症		
20 Nov 2018	社區投資共享基金計劃「健康生活。樂聚滿Fun」 健康講座 4 -骨質疏鬆關你事?		
18 Dec 2018	社區投資共享基金計劃「健康生活。樂聚滿Fun」 健康講座 5 -應對冬季流感高峰期		
12 Dec 2019	康城分區委員會 健康講座及健康檢查		
Dec 2020	母乳餵哺資訊咭及網頁	PYNEH O&G	東區區議會
4 March 2021	護眼知識線上工作坊	HKEC Ophthalmology	東區區議會

Local Pilots & Initiatives

- District Elderly Community Centre (DECC) held on- site promotion of elderly services at SWH GOPC in 2020.
- Collaboration with community NGO partners:
 1. SAGE 耆康會
 2. Quarry Bay Integrated Family Service Centre (IFSC)
鰗魚涌綜合家庭服務中心
 3. YWCA Ming Yue District Elderly Community Centre
明儒松柏社區服務中心
 4. Endeavourers HK Bert James Youth Neighbourhood Elderly Centre
香港勵志會陳融晚晴中心



DECC promote their elderly support services at Sai Wan Ho GOPC



SAGE Eastern DECC
耆康會東區長者地區中心



SAGE Eastern DECC
耆康會東區長者地區中心



YWCA Ming Yue District Elderly Community Centre
明儒松柏社區服務中心



Quarry Bay Integrated Family Service Centre
鰂魚涌綜合家庭服務中心



The Endeavourers HK Bert James Young
Neighbourhood Elderly Centre
香港勵志會陳融晚晴中心



Near Future

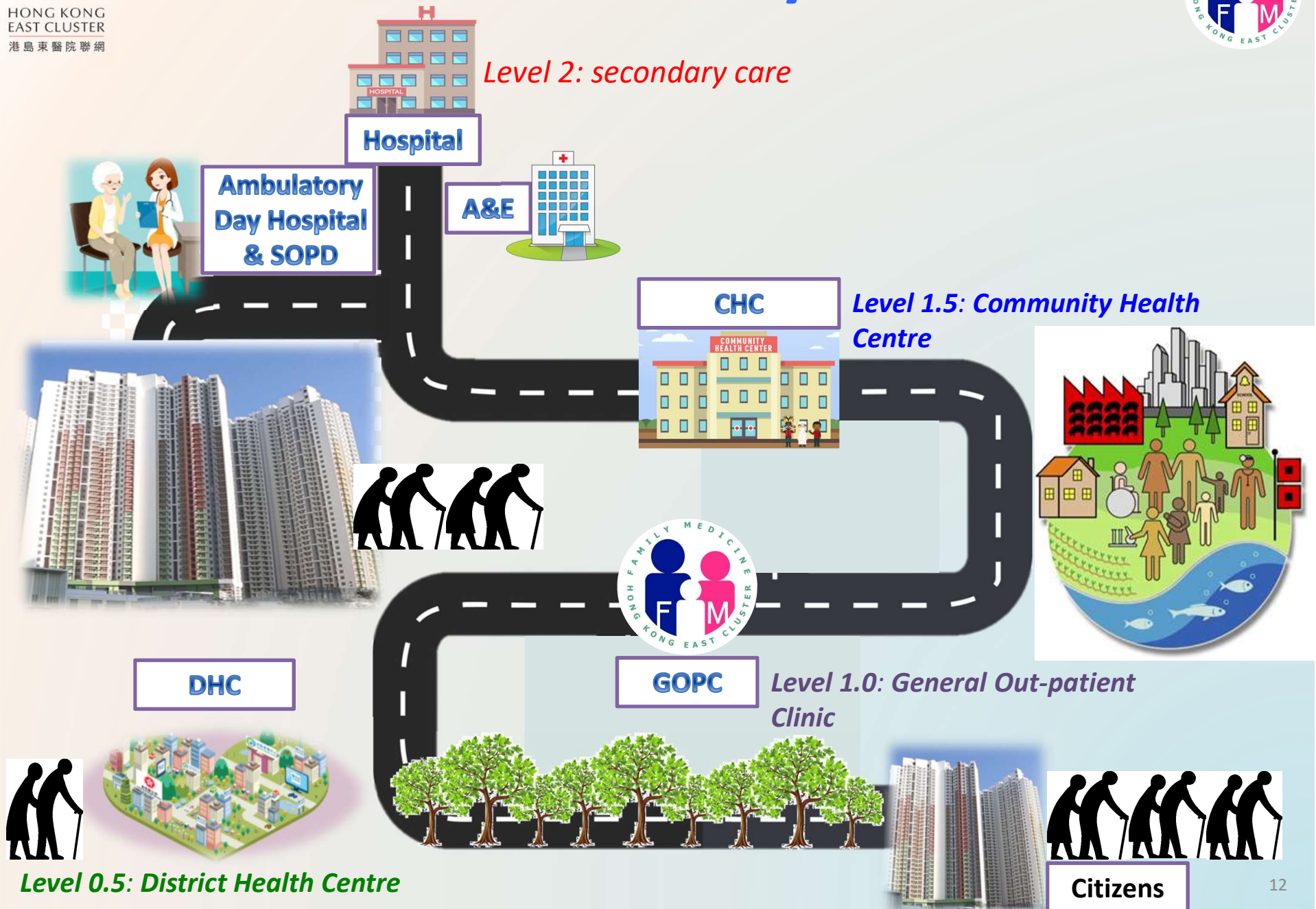
- Categorize and tailor- made to level of needs for MSC at Primary care level.
- Triage down and “*bridge*” to DHC for pre-disease patients, patients with CV risk factors or mild stable chronic diseases for patient empowerment and maintenance.
- Avoid duplications of referrals.
- Widen and build more Medical-social collaboration network in our Neighborhood.
- Right patient at right place for right level of care both medically and socially!





HONG KONG EAST CLUSTER
港島東醫院聯網

V0.5-1.5 Level Primary Care Model





HONG KONG
EAST CLUSTER
港島東醫院聯網



Thank you

CHAI WAN GOPC



ANNE BLACK GOPC



**PATIENT RESOURCE CORNER
IN GOPC**

SHAU KEI WAN GOPC



SAI WAN HO GOPC



VIOLET PEEL GOPC

